

Project Update to Rotary

Wastewater Collection and Treatment Facilities

June 20, 2007

Willmar, Minnesota



Where are we?

- **Planning**

-  **Design**

- **Construction**

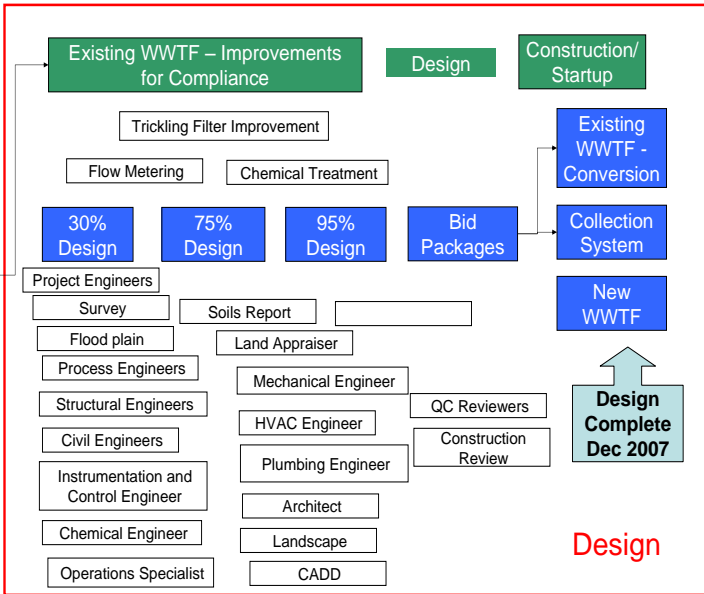
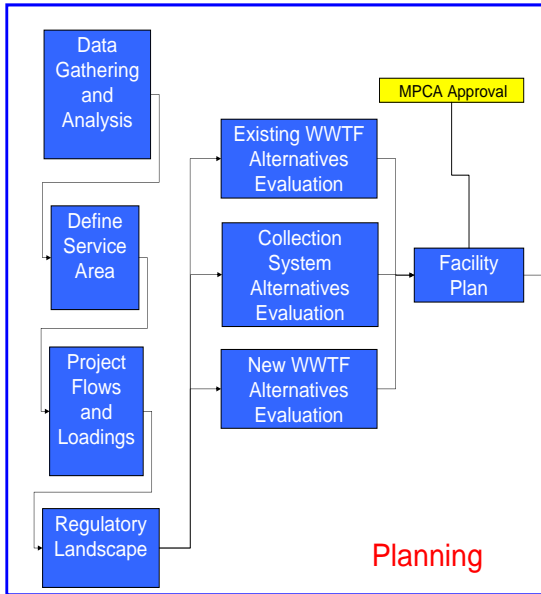
Monthly Reports

Management Support

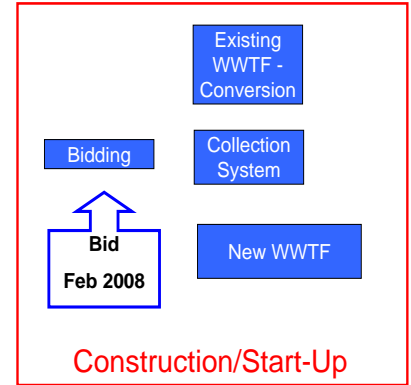
Program Management Roadmap

Funding - Grants, SRF, Bonds & User Charge----Cash Flow Planning to Meet Program Budget

File Management



Draft



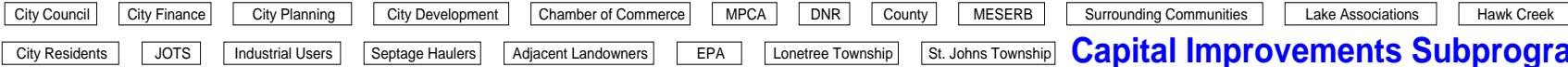
May 2010



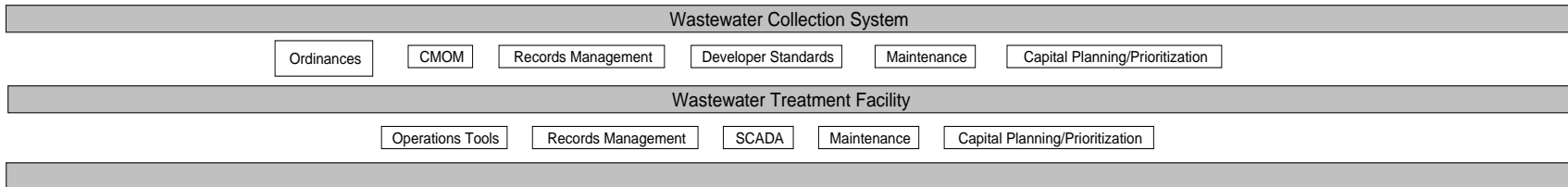
Permits



Public Relations and Stakeholder Information



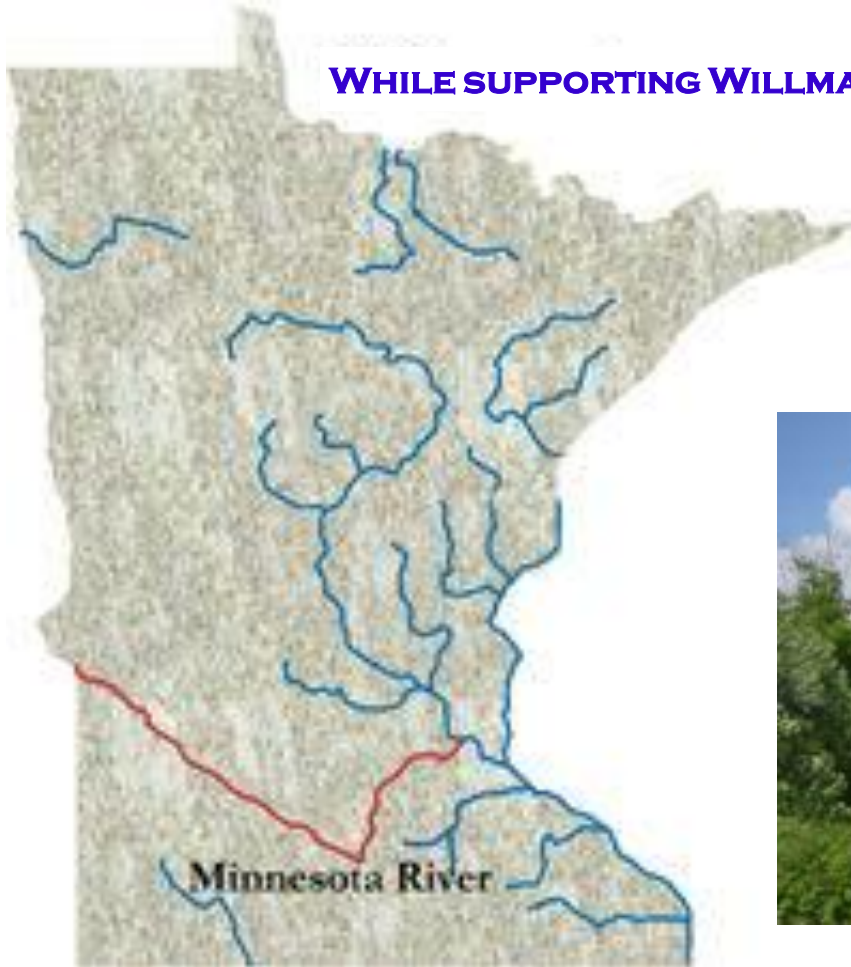
Capital Improvements Subprogram



Infrastructure Management Subprogram

IMPROVING MINNESOTA RIVER WATER QUALITY

WHILE SUPPORTING WILLMAR'S CONTINUED GROWTH



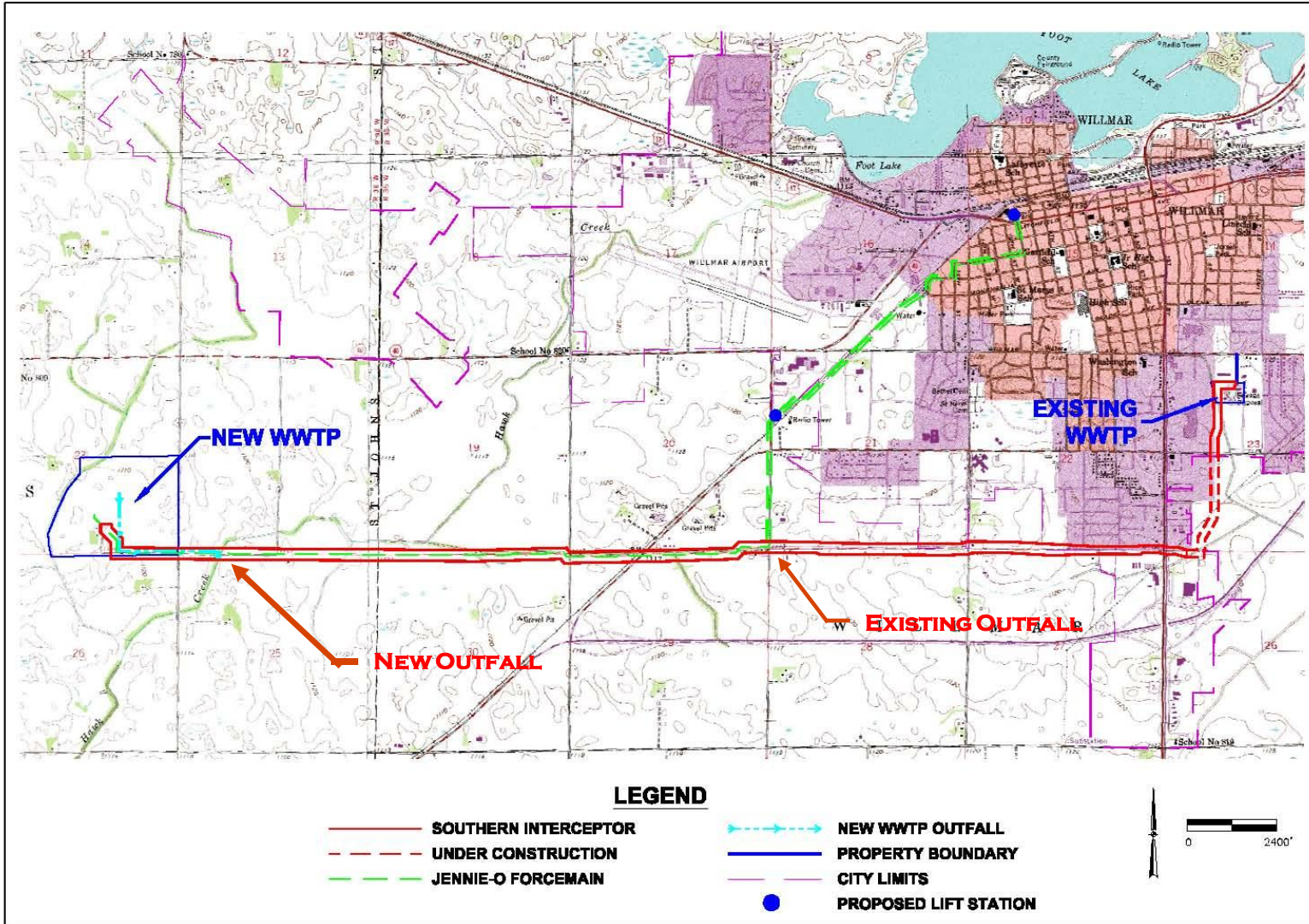


Figure 2
USGS 7.5 Minute Quadrangle Map
 City of Willmar
 New Wastewater Treatment Plant & Collection System

Willmar, Minnesota



December 15, 2025

PROJECT NO. 11076

Planning

- **Planning is completed**
- **Facilities Plan is MPCA Approved**



Design

- **30 percent complete in November 2006**
- **Cost Estimate and Value Engineering early 2007**
- ★ **Design approaching 75 percent in August 2007**
- **Design Finished by December 2007**

Construction

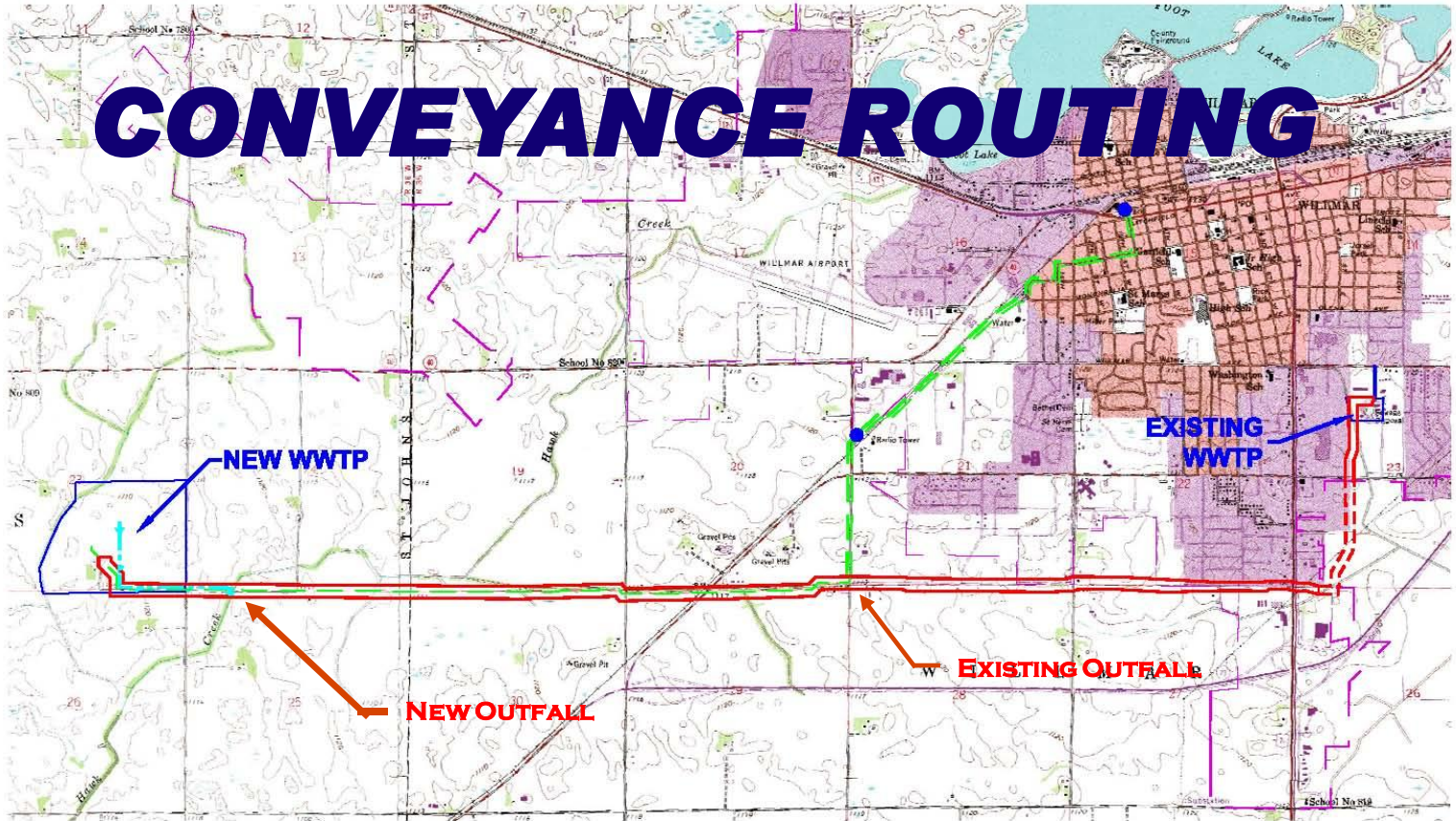
- **Phase 1 Southern Interceptor Sewer 2006-2007**
- **Phase 2 Southern Interceptor Sewer 2007**
- **Interim Modifications at WWTF 2007**



Schedule

- **Planning Phase - May 2005 – July 2006**
- **Design Phase – May 2006 – December 2007**
- **Bidding Projects – February 2008**
- **Construction and Start-up– May 2008 – December 2010**

CONVEYANCE ROUTING



LEGEND

- | | |
|--|---|
|  SOUTHERN INTERCEPTOR |  NEW WWTP OUTFALL |
|  UNDER CONSTRUCTION |  PROPERTY BOUNDARY |
|  JENNIE-O FORCEMAIN |  CITY LIMITS |
| |  PROPOSED LIFT STATION |

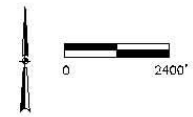


Figure 2
 USGS 7.5 Minute Quadrangle Map
 City of Willmar
 New Wastewater Treatment Plant & Collection System
 Willmar, Minnesota



PROJECT NO. 11076
 December 15, 2020

Conveyance System Design

- **Local Sewers**
 - Serve users
- **Trunk Sewer Lines**
 - Collect Local Sewers
- **Interceptor Sewers**
 - Collect Trunk Lines
 - Follow natural drainage ways



Interceptor Sewer Routing

▪ Facilities Plan

- Evaluated over six alternatives

 Selected most cost-effective, efficient route

▪ July 2006 Review of Alternatives

 Maintain Facilities Plan route

- Go around objecting land owners

▪ January 2007 Review of Alternatives (February 6 Public Meeting)

 Maintain Facilities Plan route

- Go around objecting land owners
- Move the new WWTF closer to Willmar

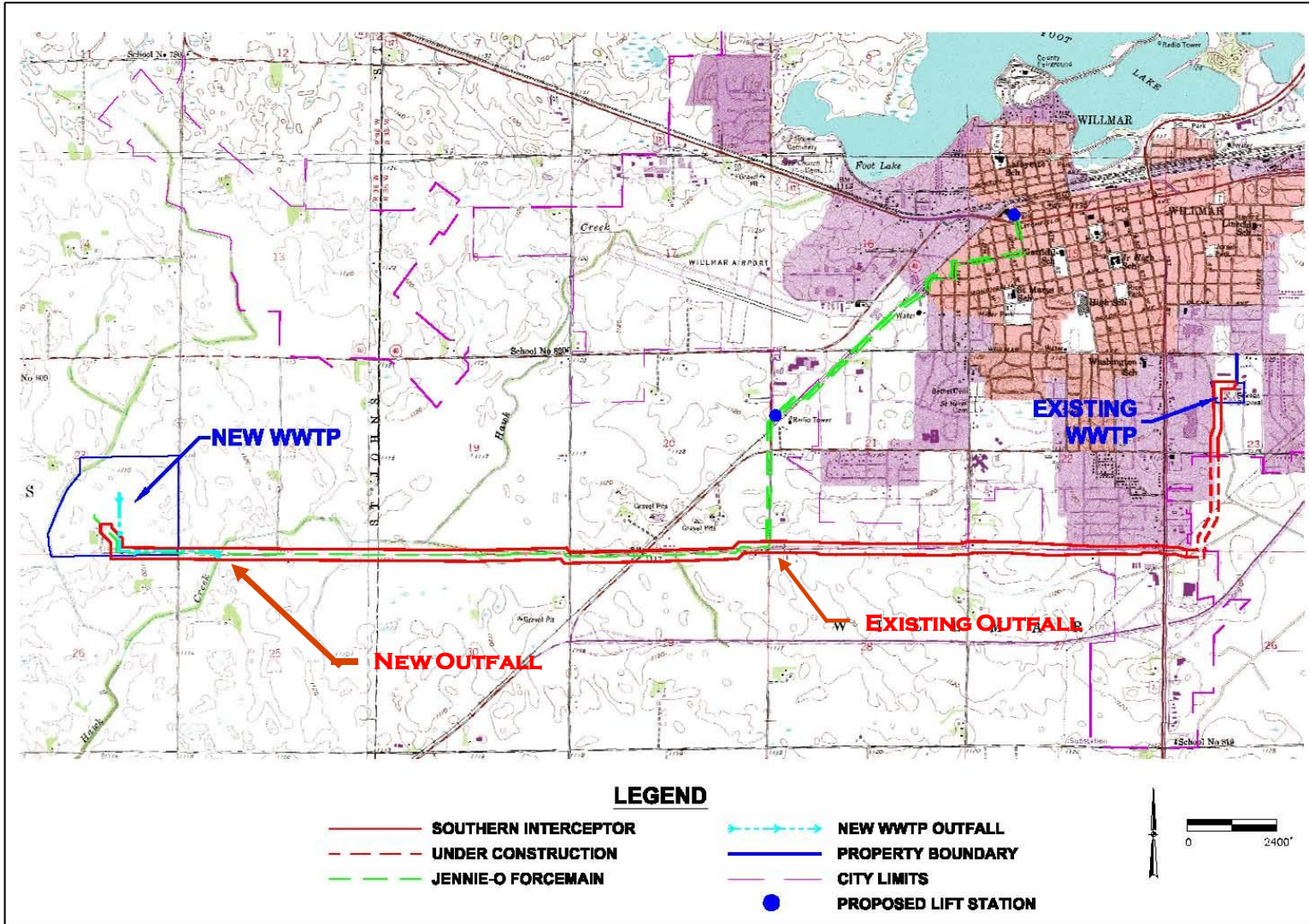


Figure 2
USGS 7.5 Minute Quadrangle Map
 City of Willmar
 New Wastewater Treatment Plant & Collection System

Willmar, Minnesota



December 15, 2025

PROJECT NO. 11076

Questions ?

Interceptor Sewer Design Principals

- **Maximize service area**
- **Minimize disruption in developed areas**
- **Maximize value**
- **Plan for future service**
- **Eliminate existing pumping stations**
- **Relieve overloaded sewer lines**

Project Funding

▪ Grants

– Federal

- > 2006 USEPA STAG Grant \$500,000
- > 2007 Federal Listing \$300,000
- > 2008 Federal Request \$2 million
- > Federal Water Resources Development Act \$15 million

– Minnesota PFA

- > Clean Water Legacy Phosphorus Reduction \$500,000
- > TMDL \$3.2 million

▪ Loans

- Minnesota Water Pollution Control State Revolving Fund Loan
 - > 2.5% +/- for up to 20 years