

# Presentation of Final Facilities Plan Wastewater Collection and Treatment Facilities

May 1, 2006

Willmar, Minnesota



# The Program - “Wastewater Treatment Plant Relocation Master Plan”

- **The Original Concept for This Project**
  - Construct WWTF at Biosolids Storage Site
    - > Wastewater Treatment Facilities Plan, November 2000

# The Reasons

- **Odor**
- **Capacity / Growth**
- **Regulations**
- **Performance**
- **Age**

# The Components

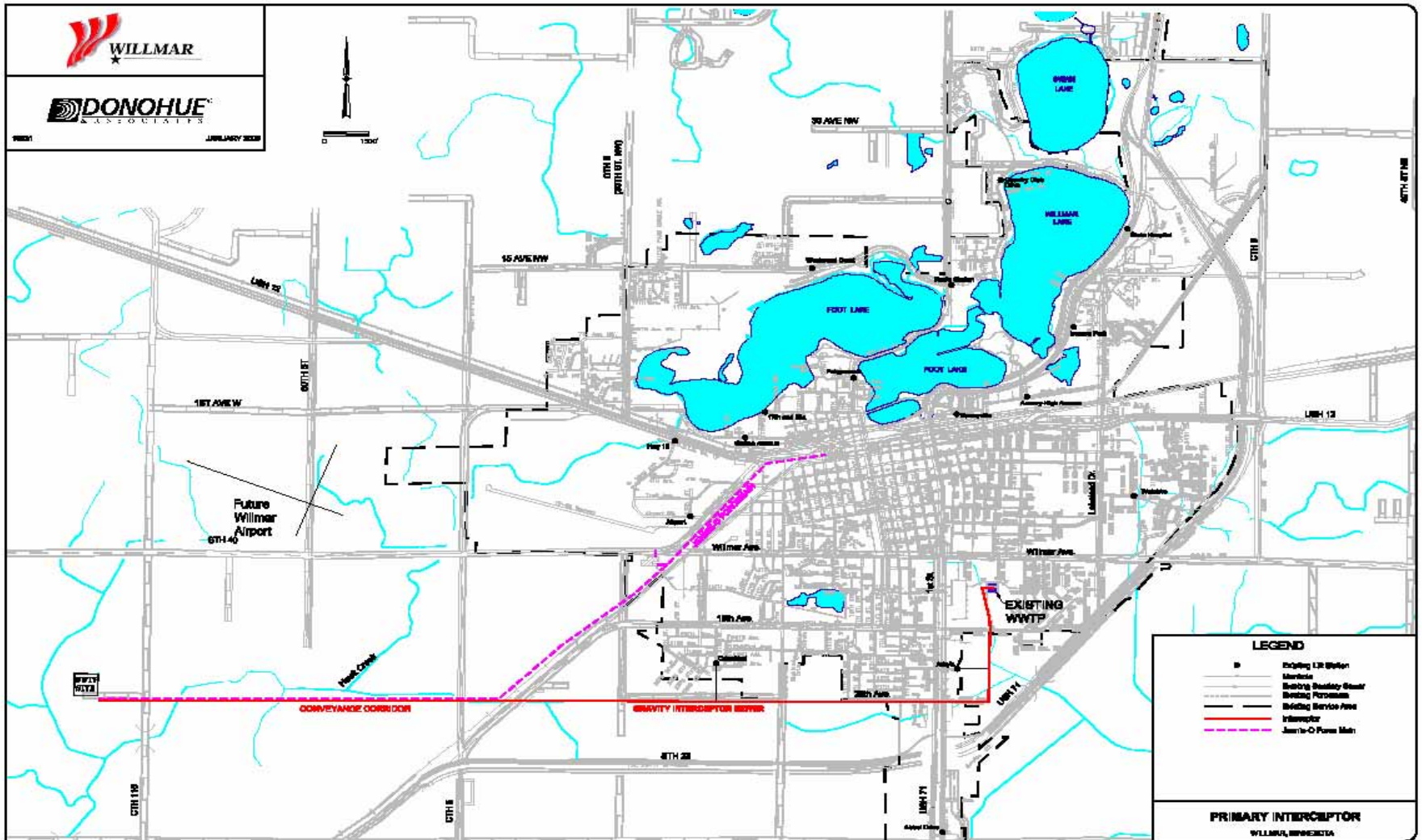
- **Conveyance**

- Pumping
- Piping

- **Treatment**

- Interim Period (2005 - 2010)
- Future Period (2010 – 2030)

# Conveyance System



# Treatment – Proposed WWTF

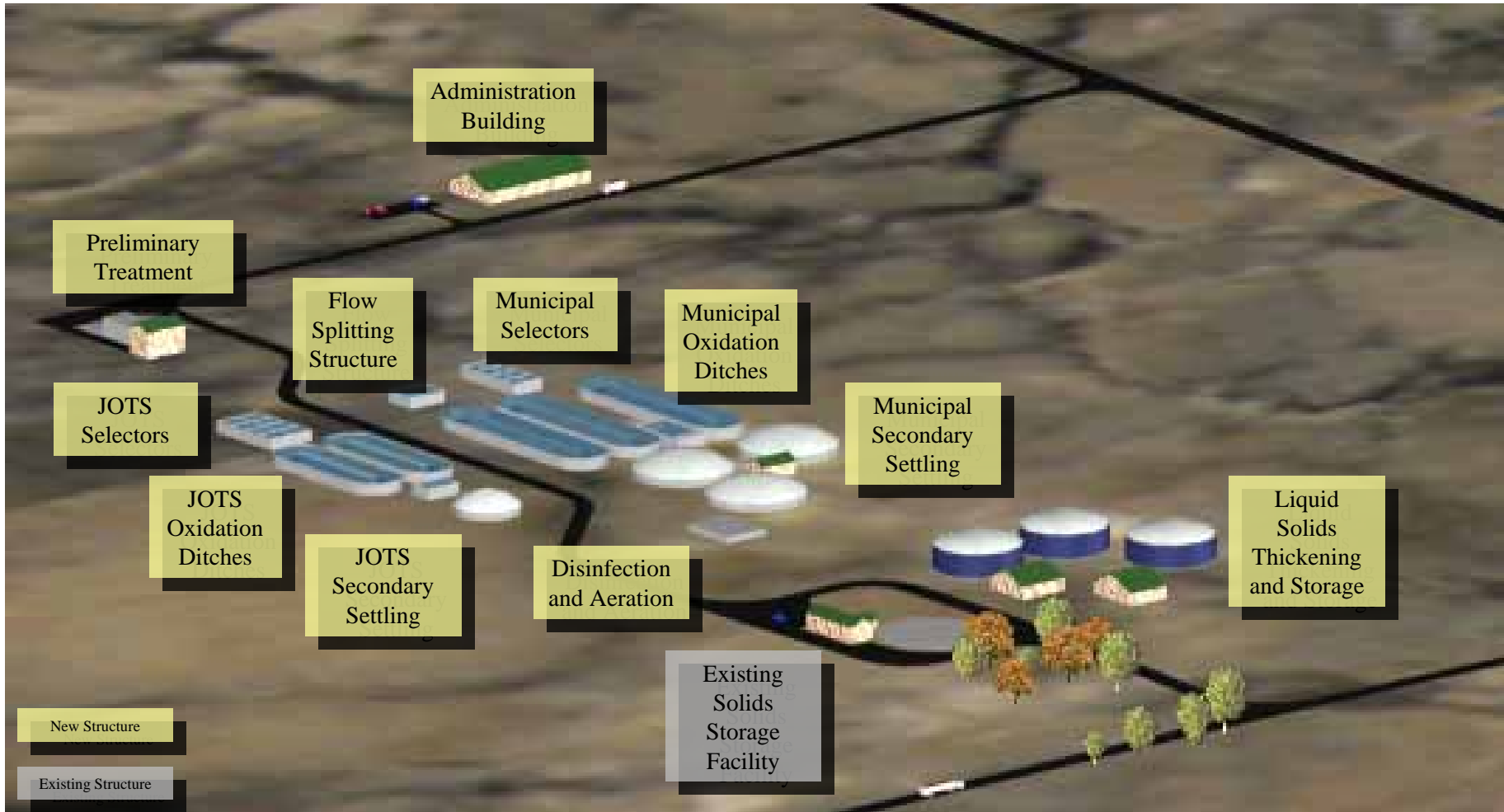
- **Proven, Robust, and Simple**

- **Water**

- Pump
- Screen
- React
- Clarify
- Disinfect + Aerate

- **Solids**

- Thicken
- Store



# Total Program Costs

**Existing WWTF** **3.1M**

- Interim
- Future Pump Station

**Collection System** **18.2M**

- City
- Jennie-O Turkey Store

**New WWTF (Demo Existing)** **49.1M**

---

**Total Construction** **70.4M**

---

**Total Program Cost** **80.5M\***

*\* Only includes collection system costs **DIRECTLY** related to the Program*

# Today

- **Submitting Final Facilities Plan (FP)**

# What is a Facilities Plan?

- **Report that Recommends a Plan to Address Wastewater Issues**
- **Requires MPCA Approval Before Proceeding with the Plan**

# What is a Facilities Plan (Cont'd)?

- **Content Defined in Minnesota Rules: Chapter 7077**

- **Documentation**

- Problems
- Flows and loadings
- Alternatives
- Evaluations
- Supplemental Material
- Recommendation
  - > The “Recommended Plan”

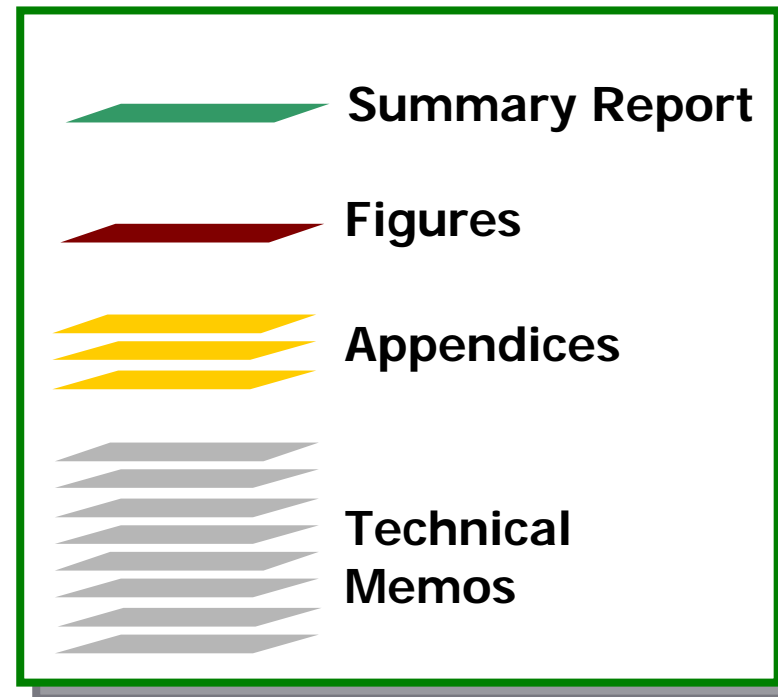


**Technical  
Memorandums**

# What is a Facilities Plan (Cont'd)?

## ▪ Summary Report that References

- Figures
- Appendices
  - > Supplemental Information
- Technical Memorandums
  - > Problems
  - > Flows and loadings
  - > Alternatives
  - > Evaluations



# DRAFT Resolution

Resolution No. \_\_\_\_

Whereas the City of Willmar desires to relocate the Wastewater Treatment Plant to a site located at 2944 75th Street SW, Willmar, MN next to the existing sludge holding facilities, approximately 6.5 miles west of the existing wastewater facility.

Whereas it is necessary to submit to the Minnesota Pollution Control Agency a Facilities Plan for the relocation of the Wastewater Treatment Plant, and said Facilities Plan must be approved by the Minnesota Pollution Control Agency.

Now therefore be it resolved by the City Council of the City of Willmar that City Staff through the agreement with Donohue and Associates Inc, is authorized to proceed with submitting the approved Facilities Plan to the Minnesota Pollution Control Agency and that the Mayor and City Administrator be authorized to execute the same.

# What's Next?

- **City Adopt FP ... May 1, 2006**
  - Add Resolution to Facilities Plan
- **Submit FP to MPCA ... Week of May 1, 2006**
- **MPCA Approval ... June /July, 2006**
- **Begin Design May, 2006**

# RoadMap

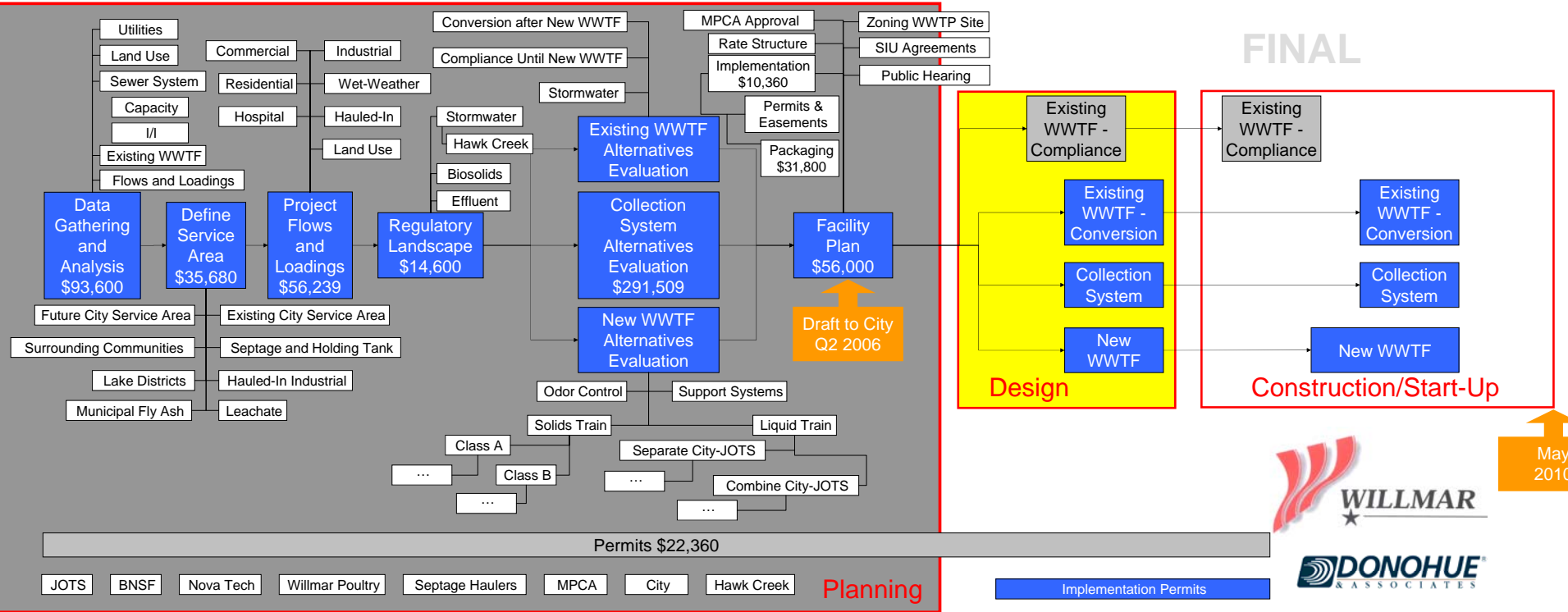
Monthly Reports \$41,440

Management Support \$47,875

# Program Management Roadmap

\$61,840 Funding - Grants, SRF, Bonds & User Charge---Cash Flow Planning to Meet Program Budget \$18,480

File Management \$50,740



FINAL

Design

Construction/Start-Up

May 2010



Planning

Implementation Permits

Public Relations and Stakeholder Information \$81,138

- City Council
- City Finance
- City Planning
- City Development
- Chamber of Commerce
- MPCCA
- DNR
- County
- MESERB
- Surrounding Communities
- Lake Associations
- Hawk Creek
- City Residents
- JOTS
- Industrial Users
- Septage Haulers
- Adjacent Landowners
- EPA
- Lonetree Township
- St. Johns Township

## Capital Improvements Subprogram

### Wastewater Collection System

- Collection System Model
- Ordinances \$11,000
- CMOM
- Records Management
- GIS
- SCADA
- Developer Standards
- Maintenance
- Capital Planning/Prioritization

### Wastewater Treatment Facility

- Operations Tools
- Records Management
- SCADA
- Maintenance
- Capital Planning/Prioritization

\$38,640

### Stormwater System

- Utility \$43,959
- Ordinances \$8,680
- Records Management
- GIS
- Developer Standards
- Maintenance
- Capital Planning/Prioritization

## Infrastructure Management Subprogram