

# Public Informational Meeting

February 23, 2006

Willmar, Minnesota



# The Program - “Wastewater Treatment Plant Relocation Master Plan”

- **The Original Concept for This Project**

- Construct WWTF at Biosolids Storage Site
  - > Wastewater Treatment Facilities Plan, November 2000

“...Program Management to oversee the relocation plan for the City of Willmar’s Wastewater Treatment Plant. The Facility Plan recently adopted by the Willmar City Council recommends a new treatment facility and related interceptor sewers be in operation on or before 2010.”

- November 3, 2004 Request for SOQ

# The Reasons

- **Odor**
- **Capacity / Growth**
- **Regulations**
- **Performance**
- **Age**

# The Process

- **Data Gathering and Analysis**
- **Service Area**
- **Flows and Loadings**
- **Regulatory Landscape**

- **Alternatives Evaluation**

- Conveyance
- Treatment



**A Plan for Consideration**



# The Plan Today

# The Components

- **Conveyance**

- Pumping
- Piping

- **Treatment**

- Interim Period (2005 - 2010)
- Future Period (2010 – 2030)

# Conveyance Plan – Southern Interceptor

- Accommodates in-line storage of peak flows.
- Route through undeveloped land, reducing surface restoration and traffic issues.
- No air relief vents, a source of odor.

# Conveyance Plan – Southern Interceptor (Cont'd)

- Provides for future potential to serve up to 1,600 acres of new development
- Elimination of Ortenblad lift station.
- Arby's lift station directly connected to interceptor.
- Arby's and Abbot lift station will not require future upgrades.

# Conveyance Plan – Southern Interceptor (Cont'd)

- **36% of future wastewater flows directly to the new WWTF.**
- **Eliminates the need to upgrade sewers that are currently at or over capacity.**



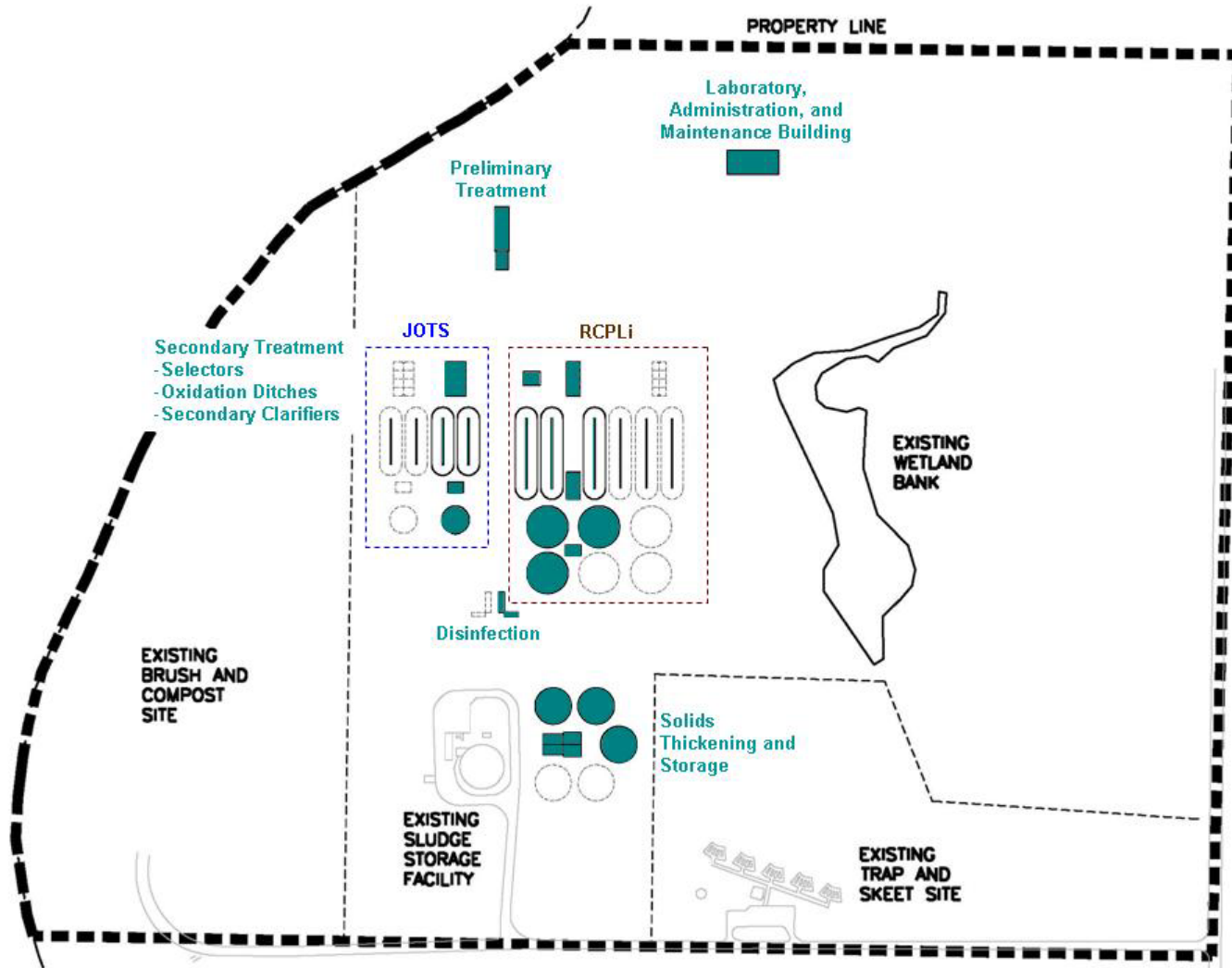
# Treatment – Proposed WWTF

- **Separate Treatment “Trains”**
  - City
  - Food Processor
- **Simple**

# Treatment – Proposed WWTF

- **Simple**
- **Water**
  - Pump
  - Screen
  - React
  - Clarify
  - Disinfect + Aerate
- **Solids**
  - Thicken
  - Store

# Treatment – Proposed WWTF



# Total Program Costs

**Existing WWTF** **3.1M**

- Interim
- Future Pump Station

**Collection System** **18.2M**

- City
- JOTS

**New WWTF (Demo Existing)** **49.1M**

---

**Total Construction** **70.4M**

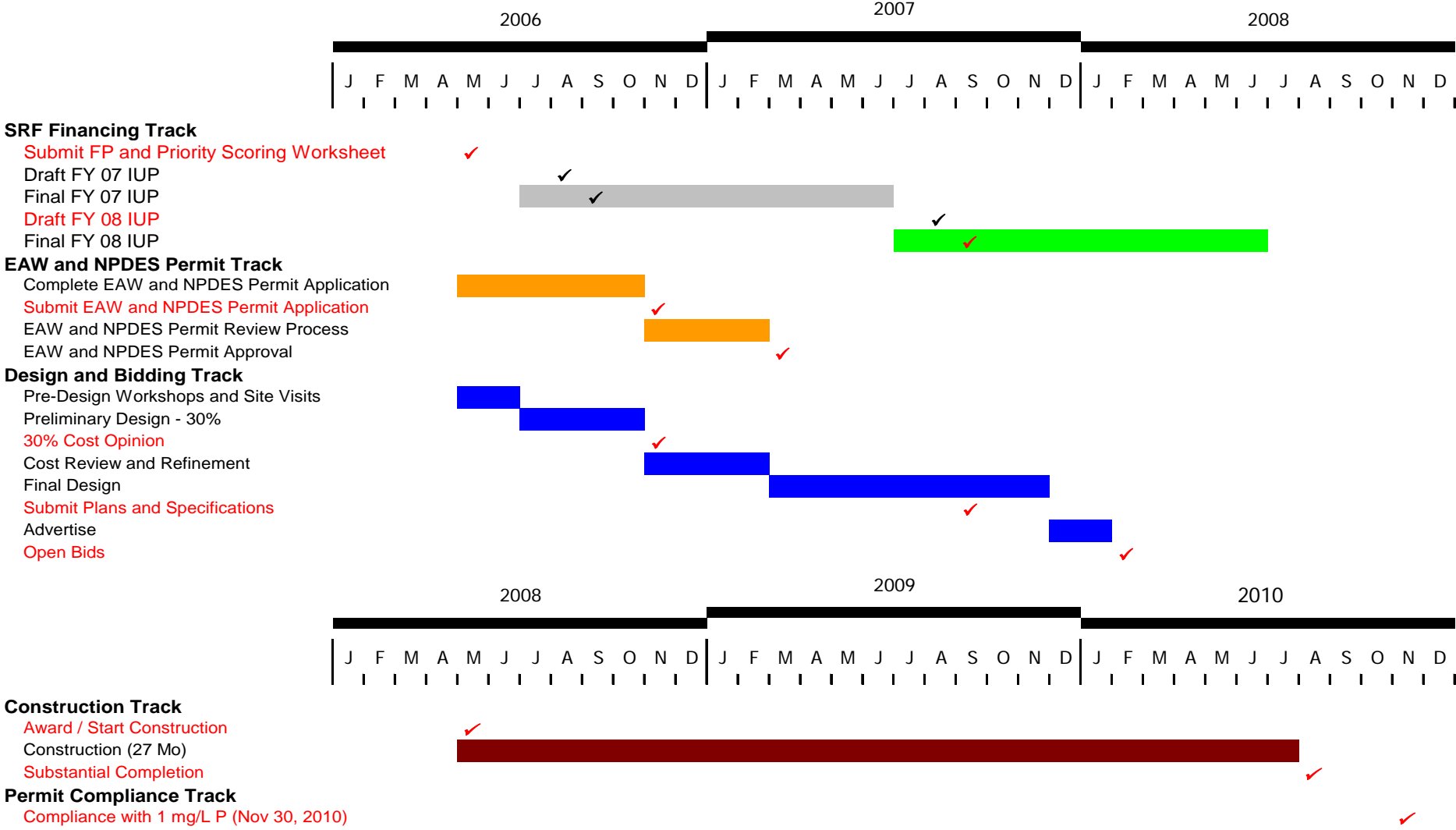
---

**Total Program Cost** **80.5M**

# Schedule

- **Step 1 – Planning**
- **Step 2 – Design and Bidding**
- **Step 3 – Construction**

**Proposed Critical Path Program Schedule**  
**Wastewater Program**  
**Willmar, Minnesota**



# Questions

??????????