

December 14, 2005

**Wastewater Treatment Plant
Relocation and Conveyance System
Project Update
Optimist Club Breakfast**



City of Willmar



Project Background

- ◆ The Users
 - 18,488 City residents and businesses/industries
 - Eagle Lake Sanitary District
- ◆ Plant is over 70 years old located in southeast Willmar
- ◆ Discharges to Hawk Creek/Minnesota River Watershed

Project Background

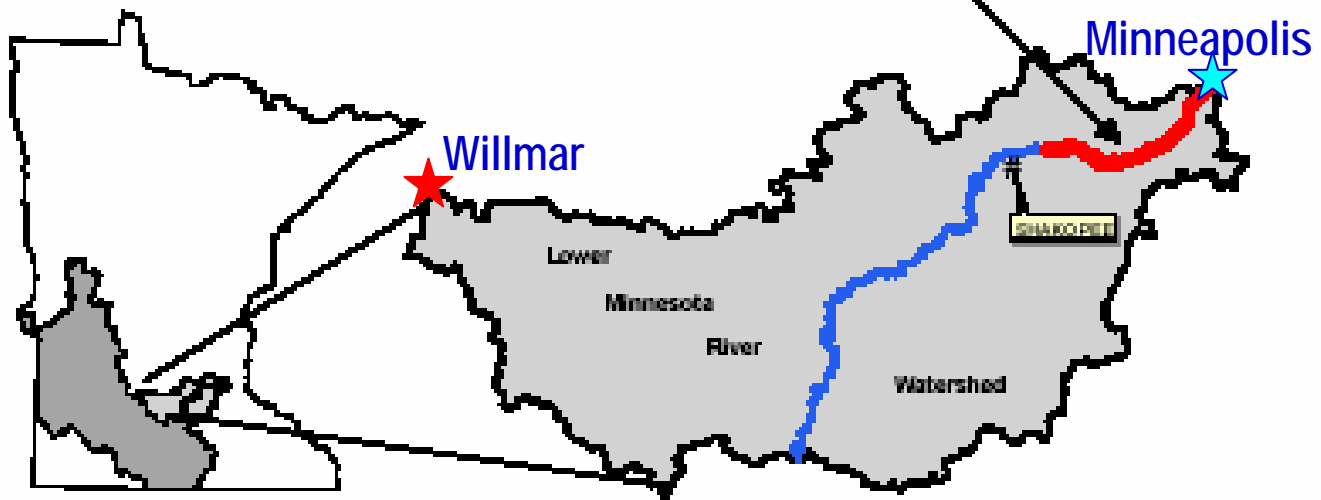
- ◆ Existing Wastewater Plant Deficiencies
 - Cannot reliably meet new permit limits
 - Outdated/Failed treatment technology
 - Capacity to meet City growth
 - Future regulatory landscape-Minnesota River water quality (phosphorous reduction)
- ◆ Existing Wastewater Sewer Deficiencies
 - Sewer backups and overflows
 - Sewer deterioration
 - Future capacity limitations
- ◆ WWTP relocation to west side of Willmar
- ◆ Sewer system upgrade and expansion

Project Significance

Regulatory Landscape

- ◆ Statewide Impact –phosphorus removal
 - Second highest point source contributor (14%) to Minnesota River
 - Too much phosphorus increases river algae growth → algae dies → reduces oxygen → decomposing vegetation causing fish kill and odors
 - Project reduces Willmar's phosphorus discharge (by 90%) to lower Minnesota River watershed and improves water quality at Shakopee
- ◆ Interstate Impact-phosphorus removal
 - Drains to Mississippi River's Lake Pepin
 - Similar impact

Lower 22 miles, Lower Minnesota River Watershed



Project Significance

West-Central Minnesota Growth

◆ Regional Impact

- Commercial and medical center supporting west central Minnesota rural/agricultural communities with goods and services
 - Turkey, cattle, swine, produce
- Facility to provide infrastructure to support regional community
- May provide treatment to other communities
- Approximately one-half of people who work in Willmar live outside the City
- Protect Hawk Creek watershed

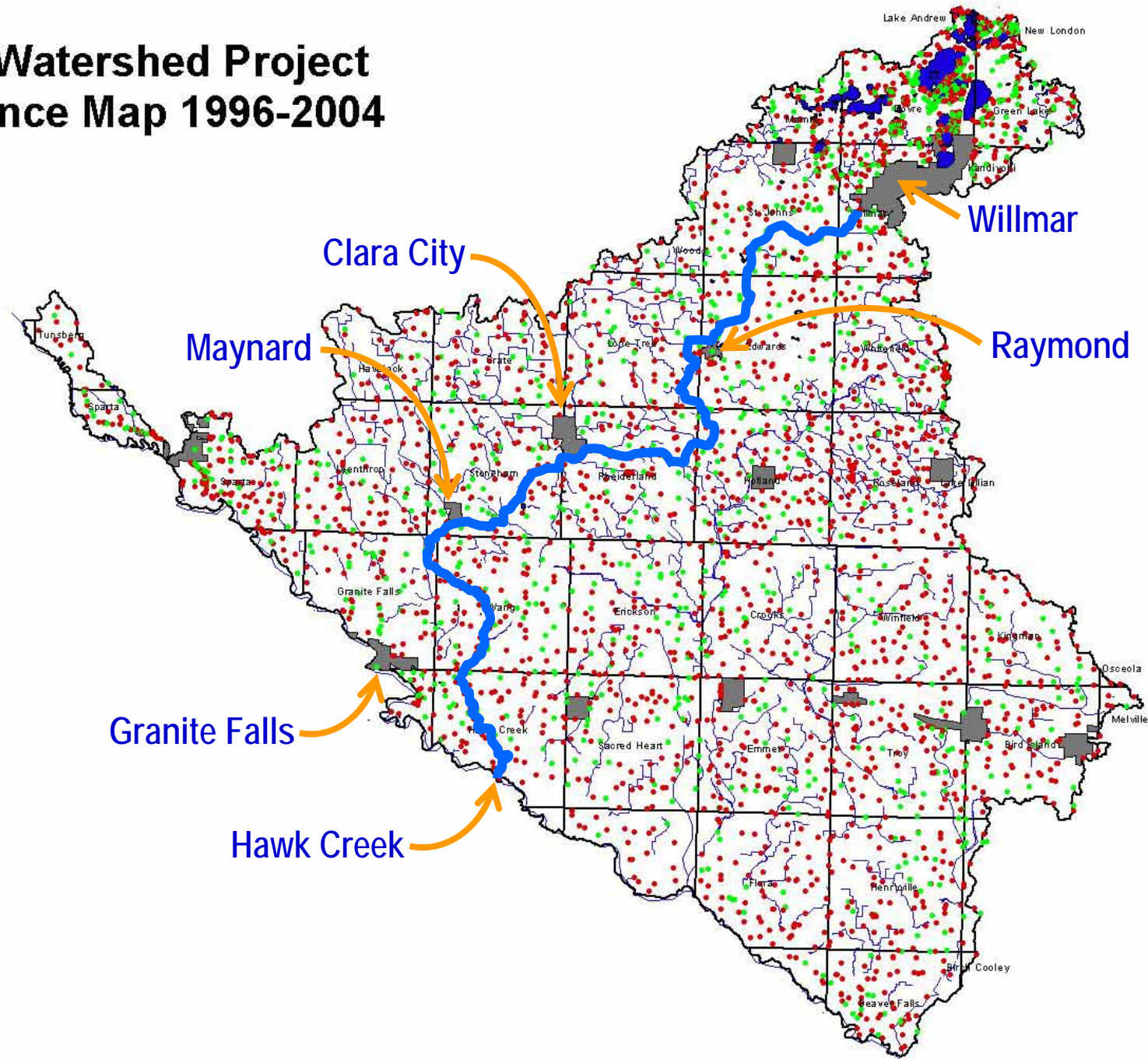
Project Significance

Environmental

◆ Local Impact

- Existing Plant
 - Objectionable odors
 - Failed technology
 - Plant nearing capacity
 - Restrictive location
 - Will not meet future permit limits
- Eliminate health risk from sewer overflows and backups
- Connecting to failed on-site systems
- Environmental protection: “first line of defense”
- Provide new proven treatment infrastructure for continued City growth

Hawk Creek Watershed Project ISTS Compliance Map 1996-2004



ISTS Compliance
● No
● Yes

■ Cities

□ Townships

— Rivers

■ Lakes

N

Project Schedule

Facilities Planning	May 2005 – July 2006
Submit Facilities Plan to MPCA	March 1, 2006
Begin Design	Late-2006
Construction	Mid-2007
Project Completion	Late 2010

This schedule is being dictated by MPCA and USEPA -
NPDES Effluent Limit Discharger requirements

LEGEND

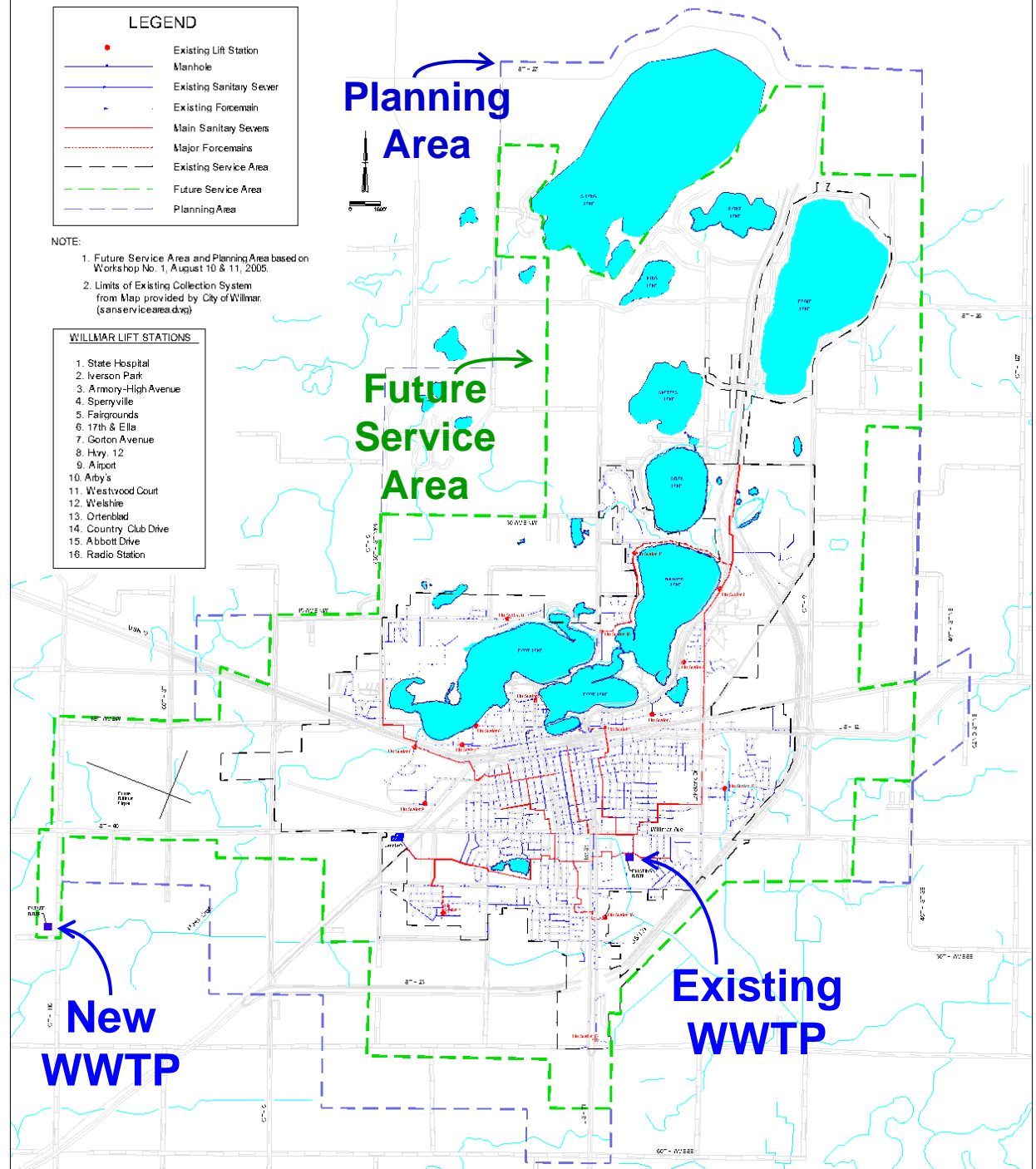
- Existing Lift Station
- Manhole
- Existing Sanitary Sewer
- Existing Foremain
- Main Sanitary Sewers
- - - Major Forcemains
- - - Existing Service Area
- - - Future Service Area
- - - Planning Area

NOTE:

1. Future Service Area and Planning Area based on Workshop No. 1, August 10 & 11, 2005.
2. Limits of Existing Collection System from Map provided by City of Willmar. (sanservicearea.dwg)

WILLMAR LIFT STATIONS

1. State Hospital
2. Iverson Park
3. Armory-High Avenue
4. Sperryville
5. Fairgrounds
6. 17th & Ella
7. Gorton Avenue
8. Hwy. 12
9. Airport
10. Arby's
11. Westwood Court
12. Welshie
13. Ortenblad
14. Country Club Drive
15. Abbott Drive
16. Radio Station



Planning Area

Future Service Area

New WWTP

Existing WWTP



New
WWTP

Existing
WWTP

Project Details

- ◆ Three Phases: Planning, Design, Construction
- ◆ The Project is in Facility Planning Phase
 - Following MPCA State revolving fund format and timeline
 - Recommended alternative will include
 - New wastewater treatment plant
 - New interceptor and force mains
 - New pumping station
 - Collection system improvements

Wastewater Treatment Plant (WWTP) Relocation



Existing Flow



Proposed Flow

CITY of WILLMAR

0 1/3 2/3 1

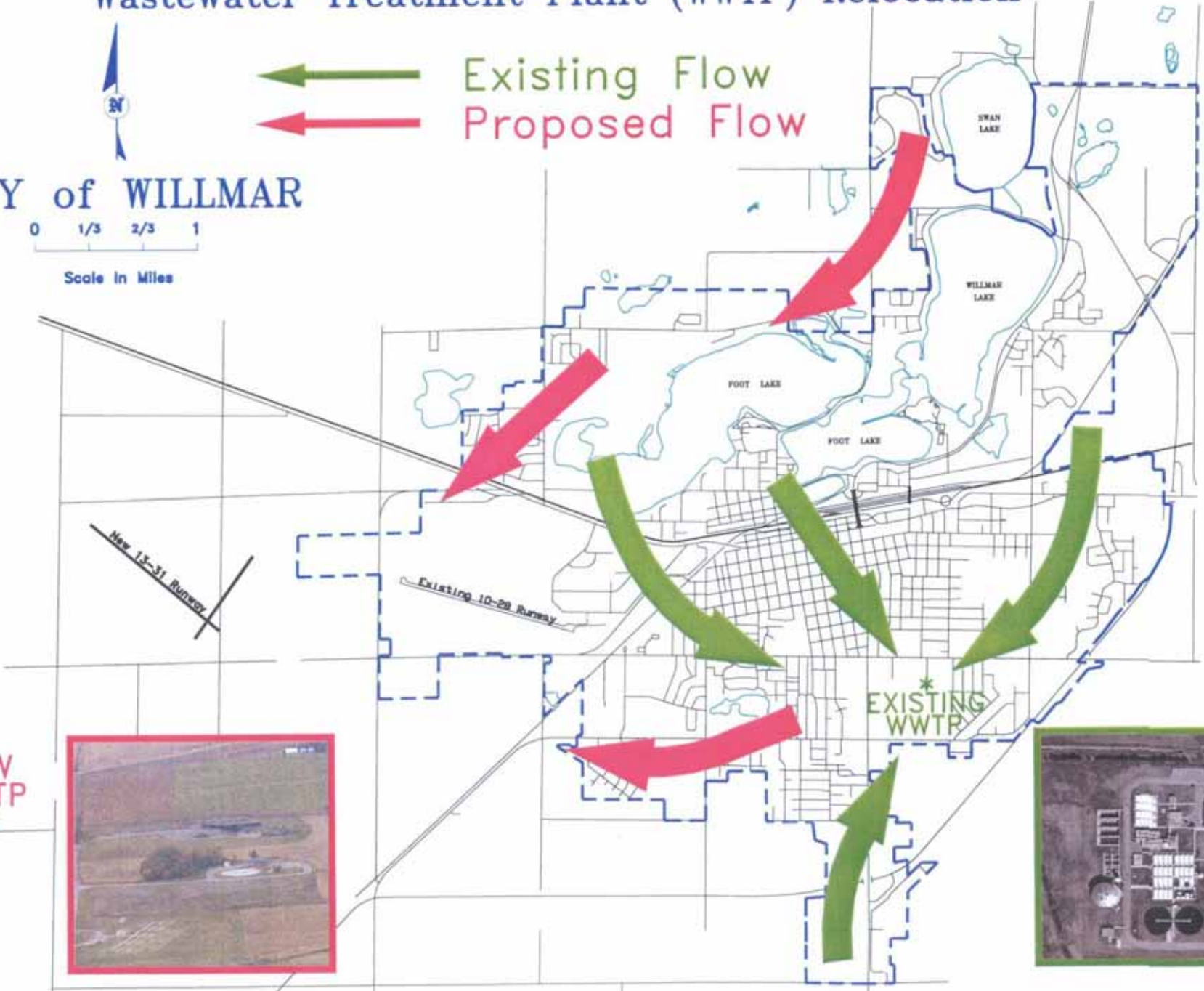
Scale In Miles

New 13-31 Runway

Existing 10-28 Runway

EXISTING
*
WWTP

NEW
*
WWTP



Project Significance

Local Impacts

◆ Local Affordability and Financial Issues

- Current estimate: \$40 million

- City rates and reserves

- Other Sources

- Local Borrowing - Eligible Minnesota WPCRF Loan Funds

- Federal Grants - Eligible U.S. EPA STAG Congressional Funds

- State Grants - Eligible WIF or Budget Line Item

- If new jobs can be tied directly to Project - Eligible DEED grants

◆ Industrial and Commercial Issues

- New WWTP will provide capacity for business growth

- New jobs - If cost of services is not too high

Willmar Demographics

<u>Parameter</u>	<u>U.S.</u>	<u>Minnesota</u>	<u>Willmar</u>
Median Household Income	\$41,994	\$47,111	\$33,455
Families Below Poverty Level	9.2%	5.1%	8.4%
Persons Below Poverty Level	12.4%	7.9%	13.1%

Possible Funding Sources

◆ Local

- Existing reserves
- Annual sewer rate increase

◆ Federal

- Secured \$500,000 U.S. EPA STAG Congressional FY 2006 grant
- Additional Congressional appropriations

◆ State

- Minnesota Water Pollution Control Revolving Fund
- Capitol Budget Request
- DEED for Direct Job Impact Monies

Overall 5-Year Funding Objective

◆ Ideal Funding Scenario

- $\frac{1}{2}$ Project cost – locally paid or financed
- $\frac{1}{4}$ Project cost – State grants
- $\frac{1}{4}$ Project cost – Federal grants

◆ Financial Realities Over 5 Years

- \$20M Local
- \$10M State
- \$10M Federal

Next Meeting

PUBLIC INFORMATIONAL MEETING

Thursday, January 26, 2006

7:00 – 9:00 p.m.

City of Willmar

Municipal Utilities Building Auditorium

700 SW Litchfield Avenue

Willmar, Minnesota

The public is invited to attend to learn more about the project and progress to date. Future public informational meetings will be announced in the West Central Tribune and in mailings.