



All-America City



# 2005 ANNUAL REPORT

**CITY  
OF  
WILLMAR**

**Willmar**



All-America City



**2005**

City Attorney

**City Clerk-Treasurer**

Community Ed & Recreation

Cultural Liaison

Finance

Fire

Planning & Development Services

Police

Public Works

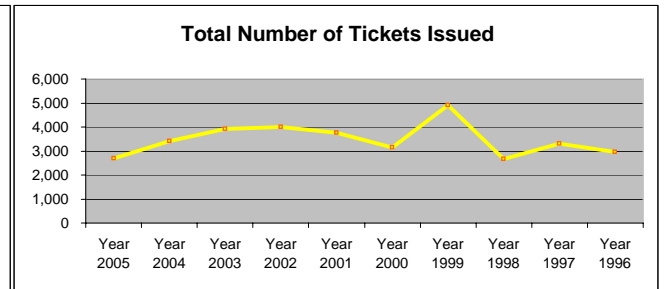
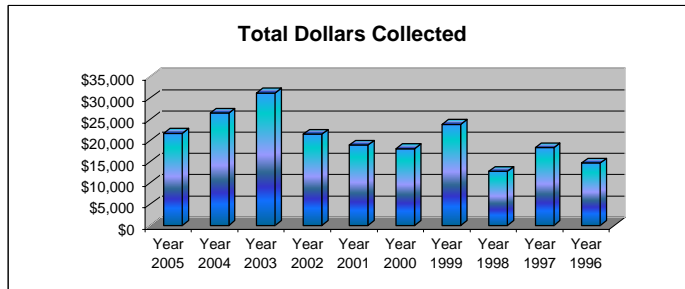


## LICENSES & PERMITS

	# Issued in 2005	# Issued in 2004	# Issued in 2003	# Issued in 2002	# Issued in 2001	# Issued in 2000
Amusement Machine	79	87	73	14	12	14
Café-Restaurant	63	56	57	61	55	48
Carnival	1	1	1	1	1	0
Cat	35	34	65	19	20	17
Circus	0	0	0	0	0	0
Dance	0	1	0	0	0	0
Dog	260	242	290	141	177	175
Dumpster	1	3	4	4	3	6
Exhibition	0	1	0	0	1	2
Fireworks Display	3	4	3	2	2	2
Fireworks Sales & Storage	10	10	10	0	0	0
Livestock, Swine & Fowl	1	2	1	1	1	1
Off-Sale	5	6	4	5	6	5
On-Sale	7	8	7	5	5	6
On-Sale 3.2% Malt Liquor	5	6	3	3	2	6
On-Sale Club	4	4	4	4	4	4
On-Sale Liquor Serving	0	0	19	136	70	44
Parade	10	7	4	11	11	9
Pawnbrokers	2	3	2	1	2	3
Service Parking	1	1	5	2	2	1
Soft-Drink	70	64	64	72	65	59
Special Events	4	9	8	1	3	0
Sunday On-Sale	12	11	11	7	9	8
Taxi Cab	1	1	1	1	2	1
Taxi Cab Drivers	0	0	4	11	8	14
Temporary On-Sale	1	1	1	0	0	0
Theatre	1	1	1	1	1	1
Wine Liquor	2	2	1	1	1	3
<b>Totals</b>	<b>578</b>	<b>565</b>	<b>643</b>	<b>504</b>	<b>463</b>	<b>429</b>

## PARKING ENFORCEMENT

	Year 2005	Year 2004	Year 2003	Year 2002	Year 2001	Year 2000	Year 1999	Year 1998	Year 1997	Year 1996
<b>Total Number of Tickets Issued</b>	2,697	3,425	3,930	4,002	3,768	3,135	4,912	2,667	3,312	2,957
<b>Total Number of Tickets Paid</b>	2,473	2,940	3,347	3,336	3,086	2,274	4,190	2,225	2,866	2,495
<b>Total Number of Voided Tickets</b>	223	274	364	359	294	238	343	225	235	279
<b>Total Dollars Collected</b>	\$21,737	\$26,489	\$31,186	\$21,460	\$18,949	\$18,122	\$23,798	\$12,750	\$18,352	\$14,676

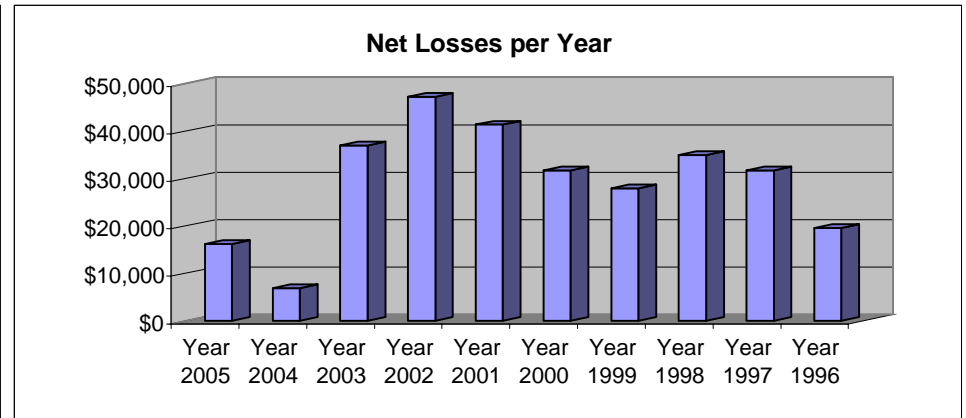
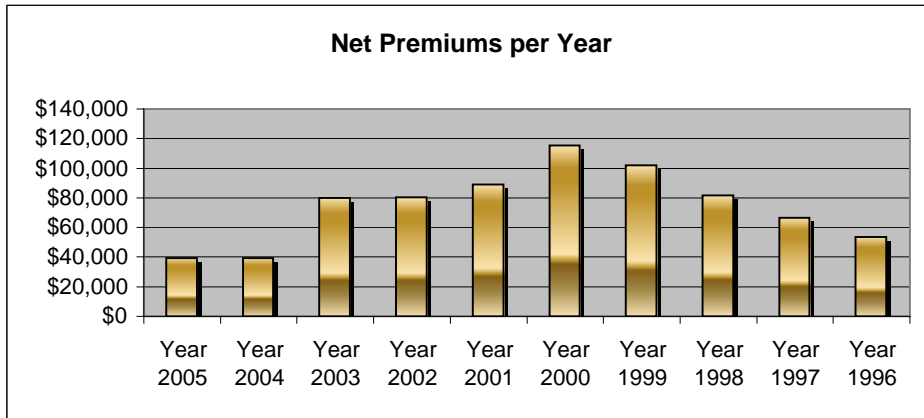


## ADMINISTRATIVE CITATIONS

	Year 2005	Year 2004	Year 2003
<b>Total Number of Tickets Issued</b>	920	668	230
<b>Amplified Noise</b>	0	0	2
<b>Disobey Signs/Signals</b>	70	63	27
<b>Dog/Cat Running at Large</b>	4	2	3
<b>Driving Rules Violation</b>	7	13	2
<b>Equipment Violation</b>	16	3	2
<b>Exhibition Driving</b>	12	11	7
<b>Expired Vehicle Registration</b>	41	22	6
<b>Exterior Storage Violation</b>	3	0	0
<b>Failure to Yield</b>	7	4	4
<b>Muffler Violation</b>	5	14	0
<b>Obscured Vision</b>	1	1	0
<b>Parking in Handicapped Zone</b>	8	1	1
<b>Speeding (1-15 mph over)</b>	698	474	169
<b>Stop Sign Violation</b>	40	24	5
<b>Turning/Starting Violation</b>	8	36	2
<b>Total Number of Tickets Paid</b>	874	627	217
<b>Total Number of Voided Tickets</b>	3	3	3
<b>Total Number Referred to Court</b>	46	41	10
<b>Total Dollars Collected</b>	\$42,770	\$30,825	\$10,810

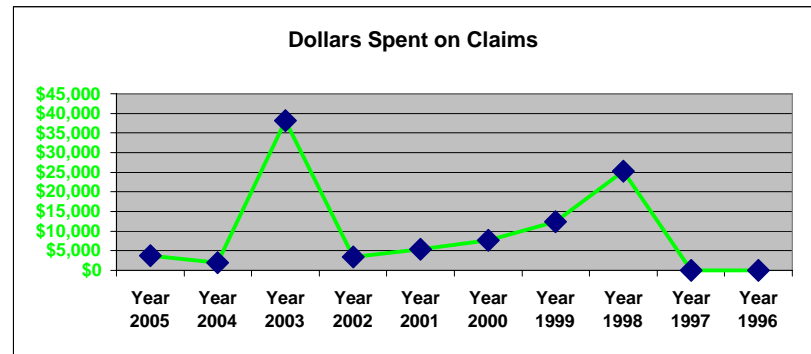
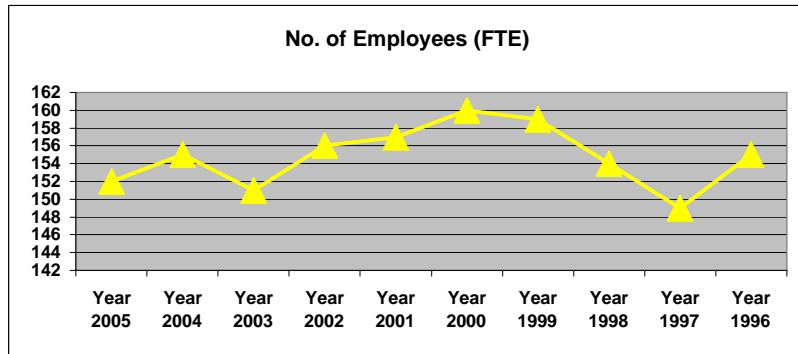
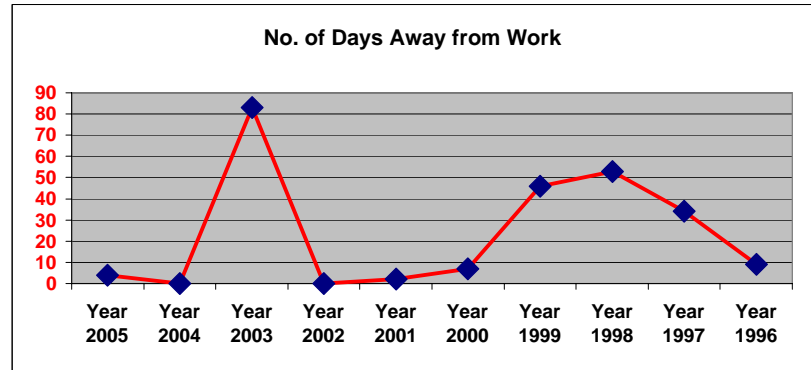
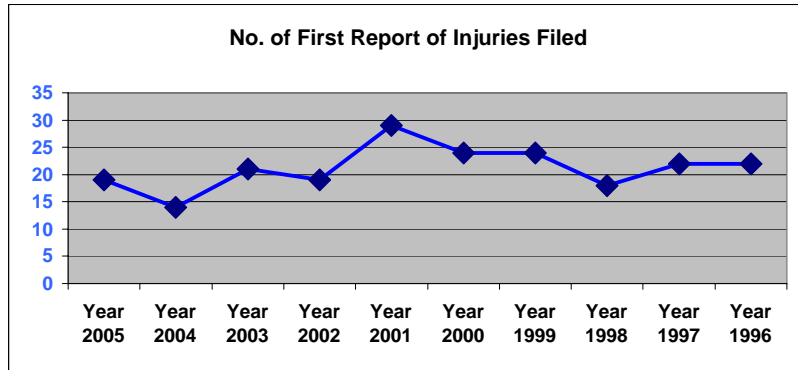
## PROPERTY/CASUALTY PREMIUM AND DIVIDEND HISTORY

	Year 2005	Year 2004	Year 2003	Year 2002	Year 2001	Year 2000	Year 1999	Year 1998	Year 1997	Year 1996
<b>Premiums</b>	\$85,956	\$76,168	\$117,882	\$118,494	\$123,011	\$136,599	\$130,505	\$120,698	\$116,574	\$100,460
<b>Dividends</b>	\$47,158	\$36,731	\$38,110	\$37,979	\$34,118	\$21,089	\$28,543	\$38,948	\$50,064	\$46,800
<b>Net Premiums</b>	\$38,798	\$39,437	\$79,772	\$80,515	\$88,893	\$115,510	\$101,962	\$81,750	\$66,510	\$53,660
<b>Paid Losses &amp; Expenses</b>	\$16,281	\$6,869	\$37,066	\$47,285	\$41,400	\$31,748	\$28,017	\$35,025	\$31,694	\$19,598



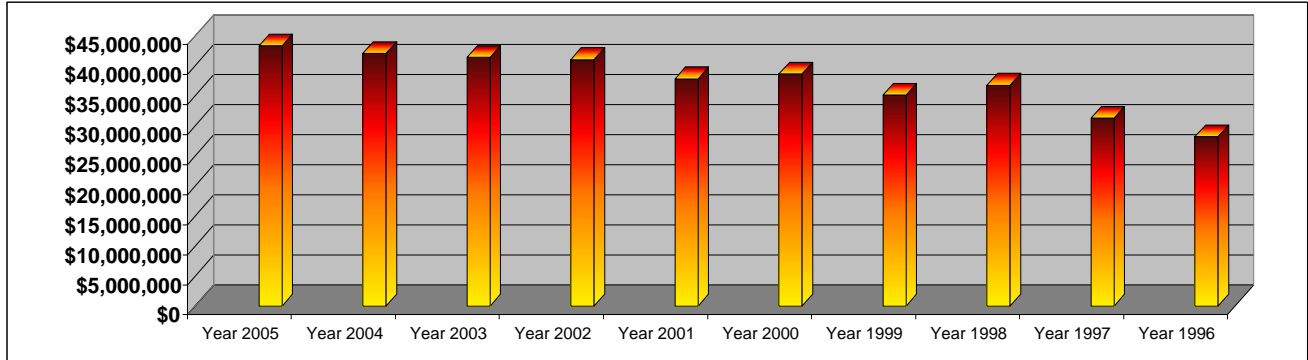
## WORKERS COMPENSATION HISTORY

	Year 2005	Year 2004	Year 2003	Year 2002	Year 2001	Year 2000	Year 1999	Year 1998	Year 1997	Year 1996
No. of Employees	152	155	151	156	157	160	159	154	149	155
No. of Manhours	240,419	233,959	239,291	234,248	242,148	238,118	233,413	244,306	228,884	258,859
No. of FRI Filed	19	14	21	19	29	24	24	18	22	22
No. of Cases w/Days Away	1	0	1	0	1	1	4	2	4	4
No. of Days Away from Work	4	0	83	0	2	7	46	53	34	9
Dollars Spent on Claims	\$3,684	\$1,883	\$38,206	\$3,409	\$5,426	\$7,729	\$12,418	\$25,232	\$3,828	\$2,624



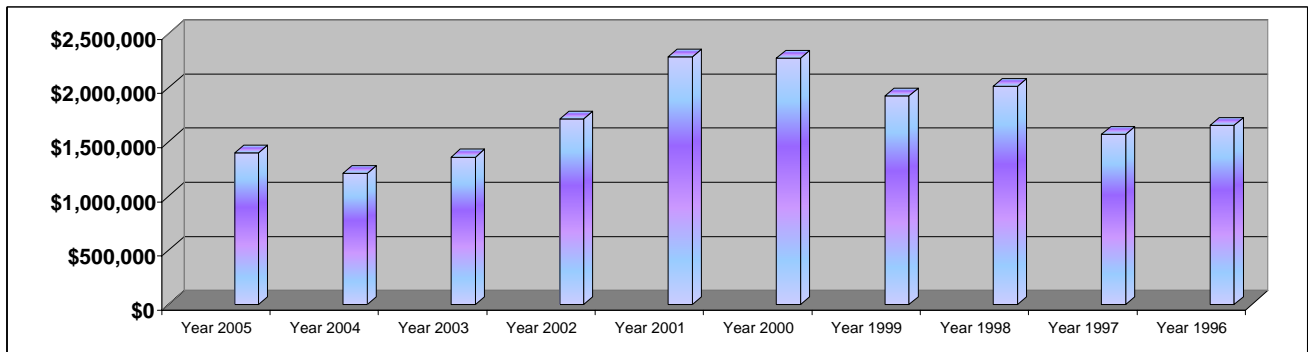
## INVESTMENT PORTFOLIO BALANCE PER YEAR

	Year 2005	Year 2004	Year 2003	Year 2002	Year 2001	Year 2000	Year 1999	Year 1998	Year 1997	Year 1996
Total Portfolio	43,285,337	41,973,221	41,345,240	40,954,116	37,782,925	38,577,992	35,065,629	36,689,816	31,245,942	28,150,864



## INTEREST AND DIVIDENDS EARNED PER YEAR

	Year 2005	Year 2004	Year 2003	Year 2002	Year 2001	Year 2000	Year 1999	Year 1998	Year 1997	Year 1996
Total Earnings	1,396,962	1,208,648	1,359,201	1,709,099	2,283,953	2,271,049	1,924,093	2,010,121	1,568,365	1,653,069



# Willmar Regional Access Channel

The WRAC 8 / TV18 / WPS Channel 19 activities are funded under a franchise agreement with Charter Communications and Entel. The agreement calls for a 5% franchise fee on cable service revenues and this income totaled \$171,957.35 in calendar year 2005. The cable television franchise agreements were signed in 2001 with 15 year agreements concluding on November 28, 2016. The News Jet disseminates data on time, weather and national news to the local subscribers on channel 8. The matrox system lists city department information and local announcements on channel 18. The Willmar Public School bulletin board list school officials and school events on channel 19.



"Do You Know" hosts Rudy Vigil and Nicole Jones

WRAC productions continue strong with local promotion of community businesses, not-for-profit activities, local citizens and community events in the "Do You Know" series. Hosted by Rudy Vigil and Melanie Eckhart through October and then hosted by Rudy Vigil and Nicole Jones through the remainder of the year.

### 7 Year Franchise Fee History

1999	\$118,253.50
2000	\$127,110.37
2001	\$167,122.40
2002	\$172,510.45
2003	\$168,172.42
2004	\$170,792.26
2005	\$171,957.35

## 2005 WRAC 8 / TV18 / WPS 19 Production Totals

**WRAC 8 - 4,264 Cablecasts**

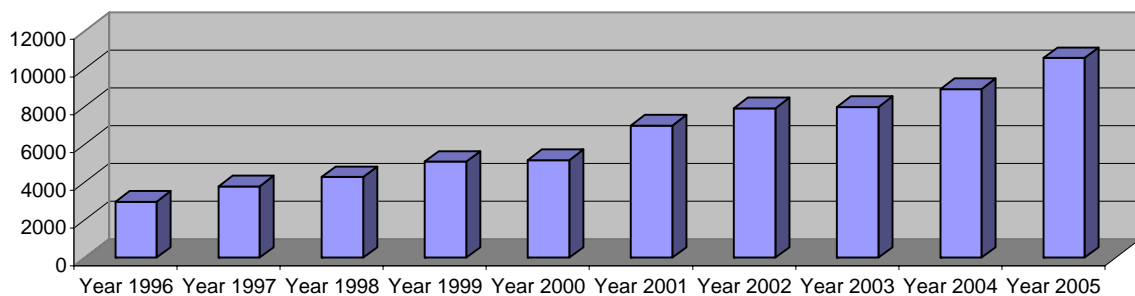
**TV 18 - 3,167 Cablecasts**

**WPS 19 - 3,136 Cablecasts**



	Year 1996	Year 1997	Year 1998	Year 1999	Year 2000	Year 2001	Year 2002	Year 2003	Year 2004	Year 2005
<b>Total</b>	<b>2974</b>	<b>3771</b>	<b>4276</b>	<b>5084</b>	<b>5166</b>	<b>7006</b>	<b>7919</b>	<b>7977</b>	<b>8929</b>	<b>10567</b>

Total Cablecasts Per Year





It has been roughly six years since the city system of the Willmar Heartland Express evolved into a countywide transit system. In October 2002 the KAT system exceeded the threshold of 12,000 one-way trips per month .

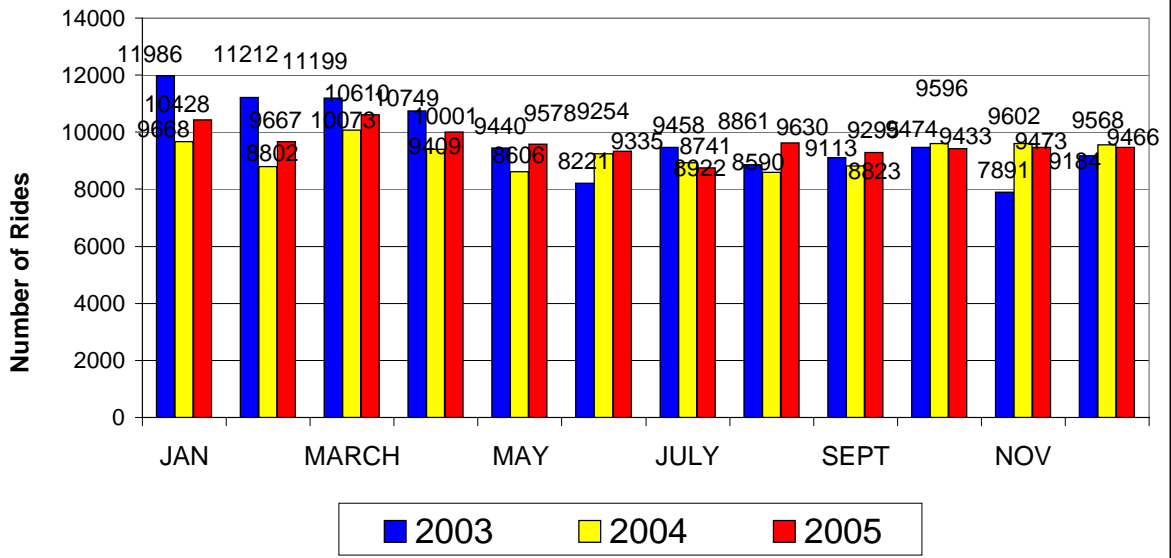
Year 2005 saw the implementation of a new mechanics bay, equipped with a mohawk mobile lift, on the south side of the building. A part time mechanic was employed in order to reduce maintenance costs and to add ease of scheduling maintenance times for the nine bus. A new camera system was installed in a bus and pursuant to favorable reviews, nine (9) camera systems were ordered in early 2006.

Bus routes and service times are constantly monitored for ridership proficiencies. CY 2005 saw improved use of the Saturday routes with an added six hour bus route in Willmar.

### Five Year History of Revenues & Expenses

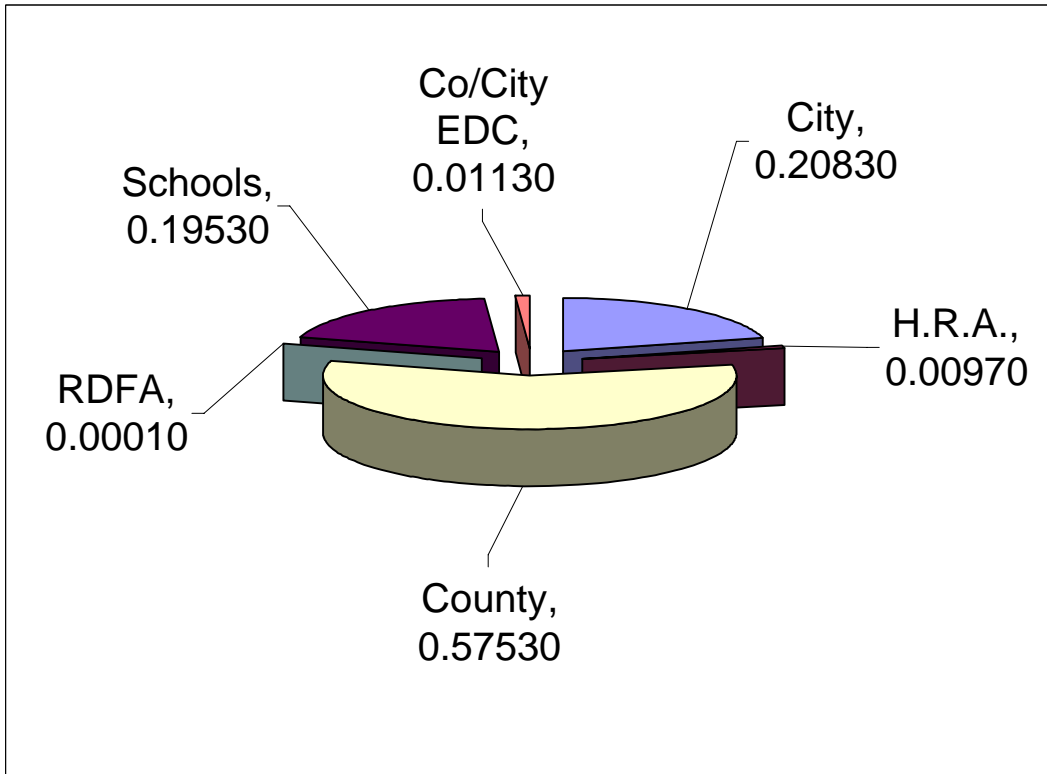
Year Ending 2000	\$1,082,610	\$995,501
Year Ending 2001	\$880,461	\$854,463
Year Ending 2002	\$902,016	\$846,717
Year Ending 2003	\$946,654	\$845,429
Year Ending 2004	\$948,449	\$846,115
Year Ending 2005	\$912,012	\$879,401

### KAT Monthly Ridership Stats



# CITY ASSESSOR CITY OF WILLMAR

## DISTRIBUTION OF TAX DOLLAR PAYABLE IN 200! WITHIN THE CITY OF WILLMAR

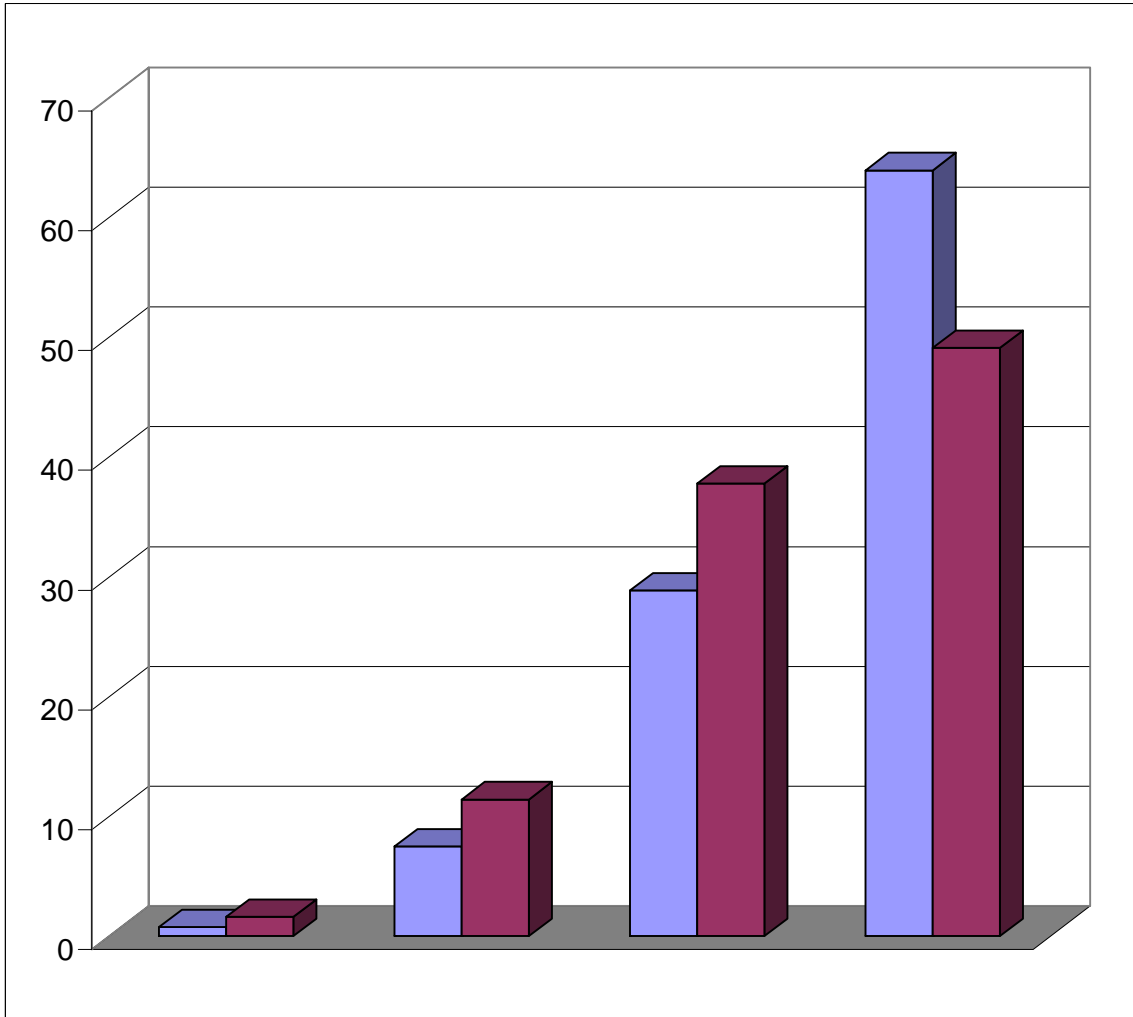


<u>CITY</u>		<u>COUNTY</u>		<u>SCHOOLS</u>	
General	\$0.2083	Health & Human Serv.	\$0.0031	General	\$0.0418
		Revenue	\$0.2644	Debt	\$0.1381
		Road & Bridge	\$0.0746	Comm. Serv.	<u>\$0.0154</u>
		Family Services	\$0.1373		\$0.1953
		Building	\$0.0336		
		Building Bond Sinking	\$0.0388		
		Mid-MN Dev. Comm.	\$0.0023	CO/CITY EDC	\$0.0113
		Capital Equip.	\$0.0210		
		Kandi. Area Transit	<u>\$0.0002</u>		
			\$0.5753		
H.R.A.	\$0.0097	RURAL DEV.FIN.AUTH.	\$0.0001	TOTAL	\$1.0000

NOTE: Referendum tax and state tax are not included in these figures.

2005 ANNUAL REPORT OF THE CITY ASSESSOR  
CITY OF WILLMAR

ORIGINATION OF TAX DOLLARS FOR 2005



	<u>Personal Property</u>	<u>Industrial Property</u>	<u>Commercial Property</u>	<u>Ag, Residential &amp; Apt. Properties</u>
2005 Blue	0.76%	7.51%	28.88%	63.98%
1995 Crimson	1.63%	11.42%	37.82%	49.14%

NOTE: Referendum tax and state tax are not included in above figures.